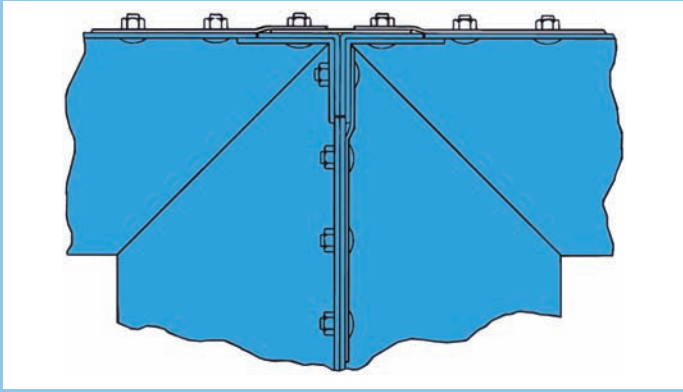


ABEL

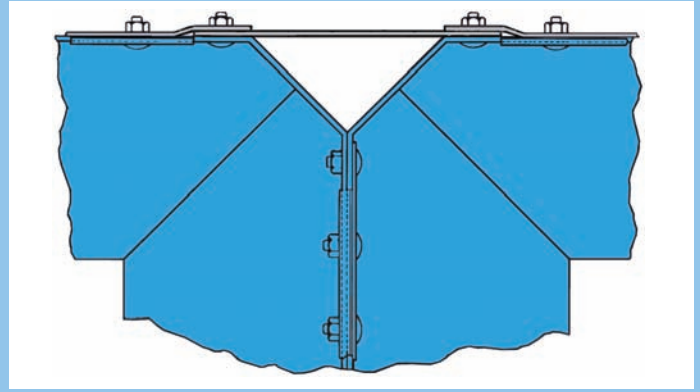
BULK LOAD OUT STATIONS



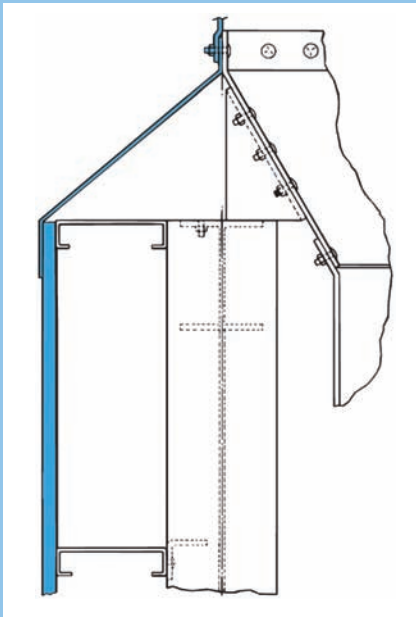
BIN DESIGN DETAILS



90° BIN CORNER This 90° corner design is both rugged and economical. It was originally introduced over 30 years ago, and has proven itself in a wide variety of applications.

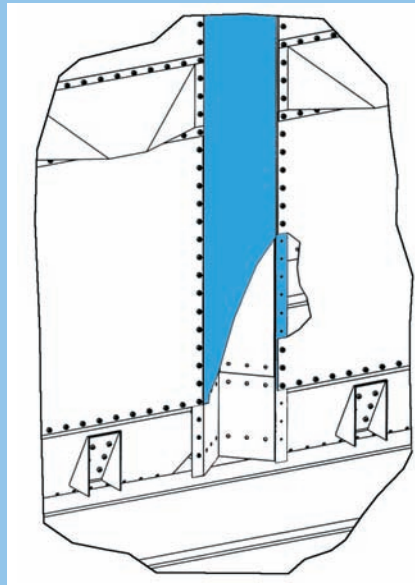


45° BIN CORNER This newer 45° corner design provides better self cleaning characteristics when storing materials that do not flow well. It is also structurally stronger, and is well suited for plant designs that must support headhouse structures above the bin system.



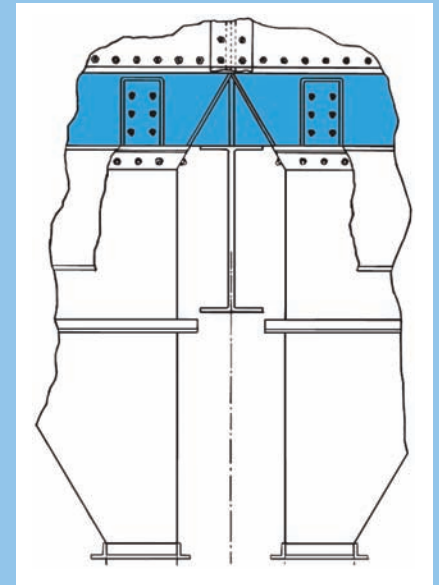
BIN WALL FLASHING

A significant benefit of the Abel bin system is the ability to easily provide a weather tight connection between the bin cluster and the surrounding building structure. The bin wall flashing shown above provides this connection.



EXTERIOR VERTICAL SEAMS

All exterior vertical seams are fitted with a 2" wide gasket strip and are covered with a metal vertical flashing seam strip. This assures you of a dust and water tight seam.



HOPPER STARTER STRIPS

The hopper starter strip is another innovative feature by Abel. It provides a simple bolted connection between the hopper and side wall of a bin. It's unique design provides structural support for the bin, and allows you to change hopper configurations at any time in the future.

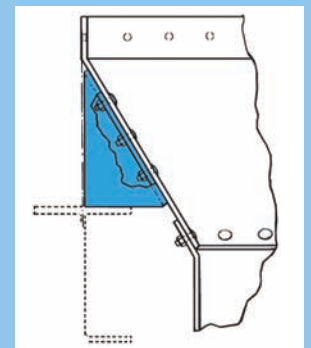


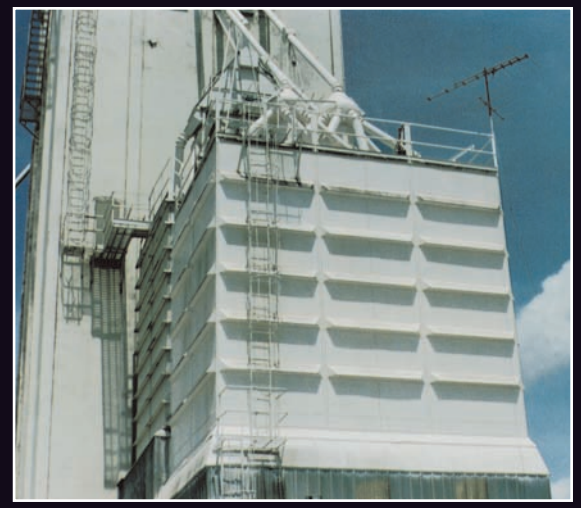
MANHOLES AND VENTS

Manholes are available in either sealed or vented designs. Both are equipped with hinged covers and safety grates. An optional dust filter can be supplied on the vented type.

HOPPER GUSSETS

Heavy duty gussets are bolted to the starter strip and provide the support for the bin system. This design allows the bins to be easily assembled on top of a typical structural steel support frame



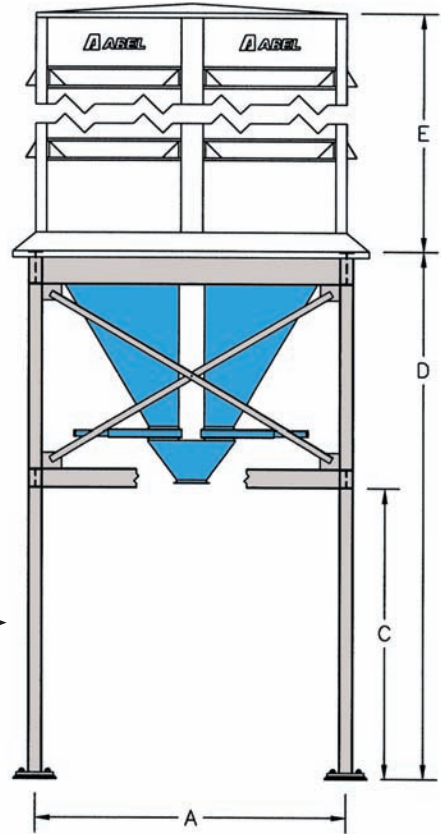
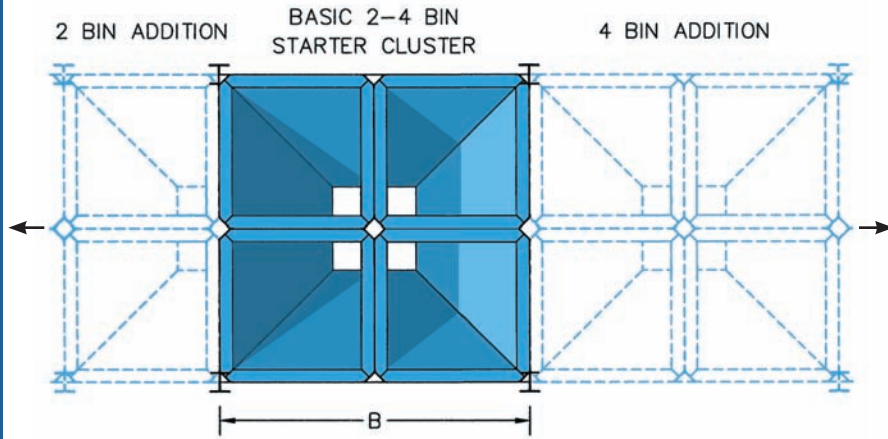


STANDARD BULK LOAD OUT STATION

ABEL'S square bolted steel storage bins systems provide complete design flexibility for bulk material load out stations. Each bin comes with 45 degree corners which have a 9" wide face to enhance material flow. All interior walls are horizontally supported on one side only with A 60 degree baffled channel to insure proper self-cleaning. The exterior of the bins have 60 degree baffled channels to prevent dirt accumulation.

These bins can be built out of painted carbon steel, galvanized or stainless steel. Bin capacity ranges from a few tons up to 250 tons per bin.

The structural steel and bins can be designed so that you can start out with a small four bin cluster and then add on to either end with either a two or four bin addition at a later date. Each of these additions are also engineered for future additions.



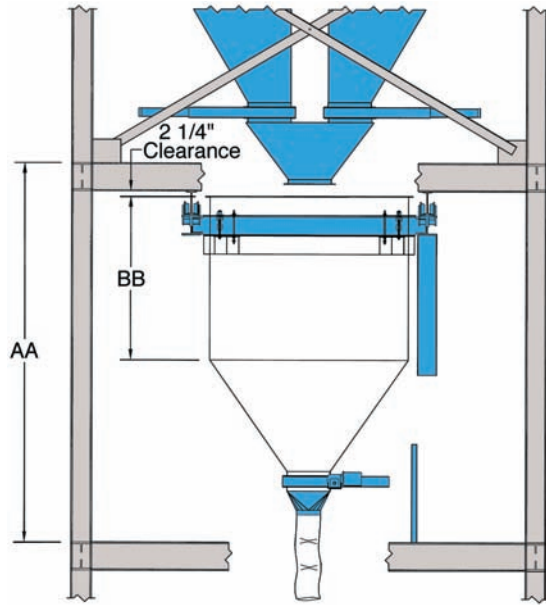
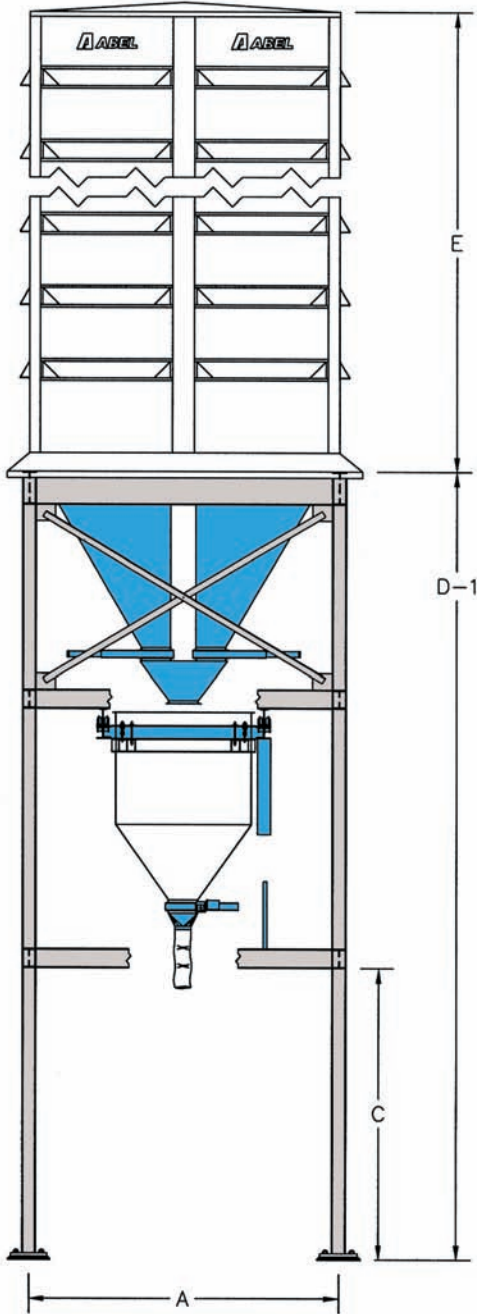
SPECIFICATIONS

8' SQUARE BINS	BIN NO.	TONS PER BIN	METRIC TONS PER BIN	CU. FT. PER BIN	CUBIC METER PER BIN	BUSHEL PER BIN U.S.	A	B	C	18' HOP. CL. D	30' HOP. CL. D-1	E
	88-1()6	6.3	5.7	315	8.9	256	16'-0"	16'-0"	15'-0"	28'-0"	41'-0"	4'-11"
	88-1()11	11.1	10.1	555	15.7	444	16'-0"	16'-0"	15'-0"	28'-0"	41'-0"	8'-8"
	88-1()15	15.9	14.4	795	22.5	636	16'-0"	16'-0"	15'-0"	28'-0"	41'-0"	12'-5"
	88-1()20	20.7	18.8	1035	29.3	828	16'-0"	16'-0"	15'-0"	28'-0"	41'-0"	16'-2"
	88-1()25	25.5	23.1	1275	36.1	1020	16'-0"	16'-0"	15'-0"	28'-0"	41'-0"	19'-11"
	88-1()30	30.3	27.5	1515	42.9	1212	16'-0"	16'-0"	15'-0"	28'-0"	41'-0"	23'-8"
	88-1()35	35.1	31.8	1755	49.7	1404	16'-0"	16'-0"	15'-0"	28'-0"	41'-0"	27'-5"
	88-1()39	39.9	36.2	1995	56.5	1596	16'-0"	16'-0"	15'-0"	28'-0"	41'-0"	31'-2"
	88-1()44	44.7	40.5	2235	63.3	1788	16'-0"	16'-0"	15'-0"	28'-0"	41'-0"	34'-11"
	88-1()49	49.5	44.9	2475	70.1	1980	16'-0"	16'-0"	15'-0"	28'-0"	41'-0"	38'-8"
	88-1()45	54.3	49.3	2715	76.9	2172	16'-0"	16'-0"	15'-0"	28'-0"	41'-0"	42'-2"
	88-1()59	59.1	53.6	2955	83.7	2364	16'-0"	16'-0"	15'-0"	28'-0"	41'-0"	46'-2"

10' SQUARE BINS	BIN NO.	TONS PER BIN	METRIC TONS PER BIN	CU. FT. PER BIN	CUBIC METER PER BIN	BUSHEL PER BIN U.S.	A	B	C	16' HOP. CL. D	28' HOP. CL. D-1	E
	1010-1()9	9.8	8.9	492	13.9	394	20'-0"	20'-0"	15'-0"	32'-0"	45'-0"	4'-11"
	1010-1()17	17.3	15.7	867	24.5	694	20'-0"	20'-0"	15'-0"	32'-0"	45'-0"	8'-8"
	1010-1()24	24.8	22.5	1242	35.2	994	20'-0"	20'-0"	15'-0"	32'-0"	45'-0"	12'-5"
	1010-1()32	32.3	29.3	1617	45.8	1294	20'-0"	20'-0"	15'-0"	32'-0"	45'-0"	16'-2"
	1010-1()39	39.9	36.1	1992	56.4	1594	20'-0"	20'-0"	15'-0"	32'-0"	45'-0"	19'-11"
	1010-1()47	47.3	42.9	2367	67.0	1894	20'-0"	20'-0"	15'-0"	32'-0"	45'-0"	23'-8"
	1010-1()54	54.8	49.7	2742	77.6	2194	20'-0"	20'-0"	15'-0"	32'-0"	45'-0"	27'-5"
	1010-1()62	62.3	56.5	3117	88.3	2494	20'-0"	20'-0"	15'-0"	32'-0"	45'-0"	31'-2"
	1010-1()69	69.8	63.3	3492	98.9	2794	20'-0"	20'-0"	15'-0"	32'-0"	45'-0"	34'-11"
	1010-1()77	77.3	70.1	3867	109.5	3094	20'-0"	20'-0"	15'-0"	32'-0"	45'-0"	38'-8"
	1010-1()84	84.8	76.9	4242	120.1	3394	20'-0"	20'-0"	15'-0"	32'-0"	45'-0"	42'-5"
	1010-1()92	92.3	83.7	4617	130.7	3694	20'-0"	20'-0"	15'-0"	32'-0"	45'-0"	46'-2"

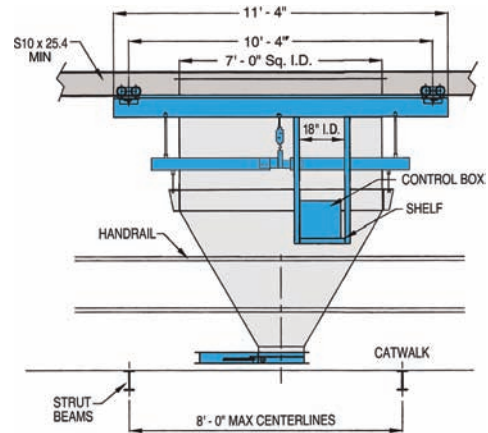
WEIGH LORRY LOAD OUT STATION

WEIGH LORRY END VIEW



SPECIFICATIONS

MODEL NO.	SIZE	CU. FT.	WT. PER CU.FT.	TONS	TRAVEL SPEED	H.P.	AA	BB
77-3T	7'x7'	186	35#	3.2	56 F.P.M.	2.17	11'-0"	3'-10"
77-4T	7'x7'	235	35#	4.1	56 F.P.M.	2.17	12'-0"	4'-10"
77-5T	7'x7'	288	35#	5.0	56 F.P.M.	2.17	13'-0"	5'-10"



WEIGH LORRY SIDE VIEW



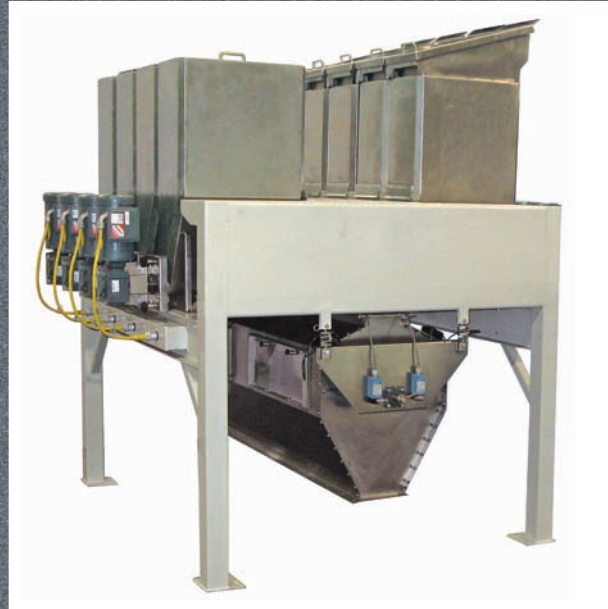
The electrically operated WEIGH LORRY System makes loading a bulk delivery truck a one man operation. These weigh lorries can be interfaced with the customer's computer so it can be positioned under any given load out bin and then control and record the weighing of the product from the bin into the weigh lorry scale hopper. The computer can then release the weigh lorry for manual, or in some cases automatic, positioning over bulk delivery trucks.



OTHER QUALITY PRODUCTS FROM ABEL



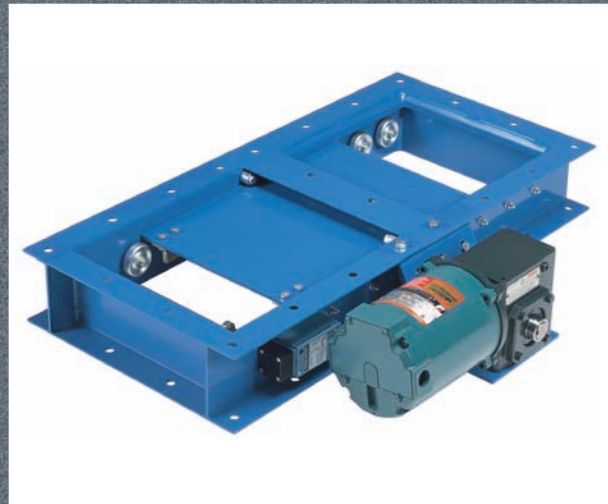
Square Bolted Storage Bins



Micro Batch Weighing Systems



Weigh Lorry



Control Gates

**SERVICES
PROVIDED BY
ABEL**



DESIGN AND ENGINEERING ASSISTANCE



NEW PLANT DESIGN



PLANT MODERNIZATION

ABEL

ABEL MANUFACTURING COMPANY, INC.

1100 NORTH MAYFLOWER DRIVE ■ P.O. BOX 757 ■ APPLETON, WI 54912-0757 ■ U.S.A.

FORM: BN-BL1-2009-1

TEL: 920-734-4443
FAX: 920-734-1084
E MAIL: sales@abelusa.com
WEB: www.abelusa.com

© Copyright 2009 All rights reserved